

PALOMA
HOTELS

OCEANA

Summer 2024
Fact Sheet

NEW
AGE
F&B CONCEPT





GENERAL INFORMATION

Official Category : 5 Star

Catalogue Category : 5 Star

Hotel Concept : Luxury Ultra All Inclusive

Year of Construction : 2012

Total Number of Rooms : 482 (4 lift and 5 floor amounts)

Credit cards : Visa, Master Card

LOCATION

Directly on the Beach

5 km to Side

8 km to Manavgat

65 km to Antalya Airport

70 km to Antalya City Center

CONTACT INFO

Kumköy Mevkii, TR-07330 Side- Antalya

P.+90 242 756 06 06 | info@palomaoceana.com |
palomahotels.com

Our operation, such as meals and services, are adjusted according to the international and local rules and guidelines. Changes to hotel information, facilities, activities and services can occur for a variety of reasons. Paloma Hotels reserves the right to make changes without prior notice.

ALL-IN FOOD

Breakfast, lunch and dinner in Paloma Restaurant buffet with seasonal organic food corner, fresh orange juice at breakfast

- Late Breakfast at Paloma Restaurant 10:00-11:00
- Snack service at Quentine 12:00-15:00
- Ice Cream served daily during lunch and dinner at Paloma Restaurant
- Patisserie serving fresh pastries and cookies with coffee & tea, Ice Cream 11:30 -18:00
- **Snack service at Pizzeria Al Pino -traditional Italian pizza 12:30-16:00**
- Late Dinner at Paloma Restaurant 23:00-01:00
- Late Snack at Paloma Restaurant 01:00 - 06:00

• **A'la Carte Restaurants - Reservation is required through Paloma Hotels App or Guest Relations.**

Wabi Sabi - Fusion Far East - free of charge

Quentine - Contemporary Mediterranean - free of charge

Curio - BBQ – **with an extra charge**

Avare -Traditional Turkish Kebabs - free of charge

• Beach & Pool Concept: Summer Coolers, fruits and small snacks served to the sun beds at the beach and pool area at certain times.

• Food Festivals and Special Events Calendar is available

• **Kids' Chef:** Our Kids' Chef combines fresh and healthy products with entertainment to bring out nutritious and fun meals for our little guests.

• 24 hr room service with an extra charge. Orders can be made through Paloma Hotels App.



NEW
AGE
F&B CONCEPT

Our operation, such as meals and services, are adjusted according to the international and local rules and guidelines. Changes to hotel information, facilities, activities and services can occur for a variety of reasons. Paloma Hotels reserves the right to make changes without prior notice.



BEVERAGE

- Welcome drink on arrival
- Selected import and local spirits, Organic Wine selections served in Bars & Restaurants
- Bars: Aqua Bar, Quentine Bar, Piano Bar (24hr), Turquoise Bar, Ocean Bar (villas), Vitamin Bar, Terrace Bar
- Mini bar: Replenished daily in once with water, soft drinks and beer
- Kettle coffee & tea service is available in all rooms

****Alcoholic drinks are not served to guests under 18.**

NEW
AGE
F&B CONCEPT



BEACH&POOLS

Hotel owns sandy beach

Pools

2 Outdoor swimming pools: 1900 m³ + 2150 m³-140 cm deep

2 Separate Children's Pool: 45m³ + 25 m³ - 40 cm deep

Villa Pool: 700m³ -140 cm deep, private use only by villa guests

Indoor Pool: 210 m³ - 140 cm deep, (only winter season)

Indoor Children's Pool: 10 m³ - 40 cm deep(only winter season)

Aqua Park with 7 water slides Pool: 410 m³ -120 cm deep

Pool and Aquapark Regulations, which are determined according to International Standards, are available in the QR information system located in the rooms at our hotels.

Towels, sun beds and sun shades are provided free of charge

PalomAqua

Free shuttle service is provided to PalomAqua,reservation is required 24 hours in advance.

Palomaqua is located at Sorgun/Side

Aquapark with 3 family slides, 2 racer slides, 2 extreme slides,5 body & inner tube slides, 7 separate kids' slides, and a splash world.

Our operation, such as meals and services, are adjusted according to the international and local rules and guidelines. Changes to hotel information, facilities, activities and services can occur for a variety of reasons. Paloma Hotels reserves the right to make changes without prior notice.

ENTERTAINMENT & MINI CLUB & SPORT FACILITIES

VACATION INTO UNLIMITED FUN!

Palomotion welcomes you with a generous array of family-friendly activities and curated experiences. Have the time of your life at Paloma Hotels.

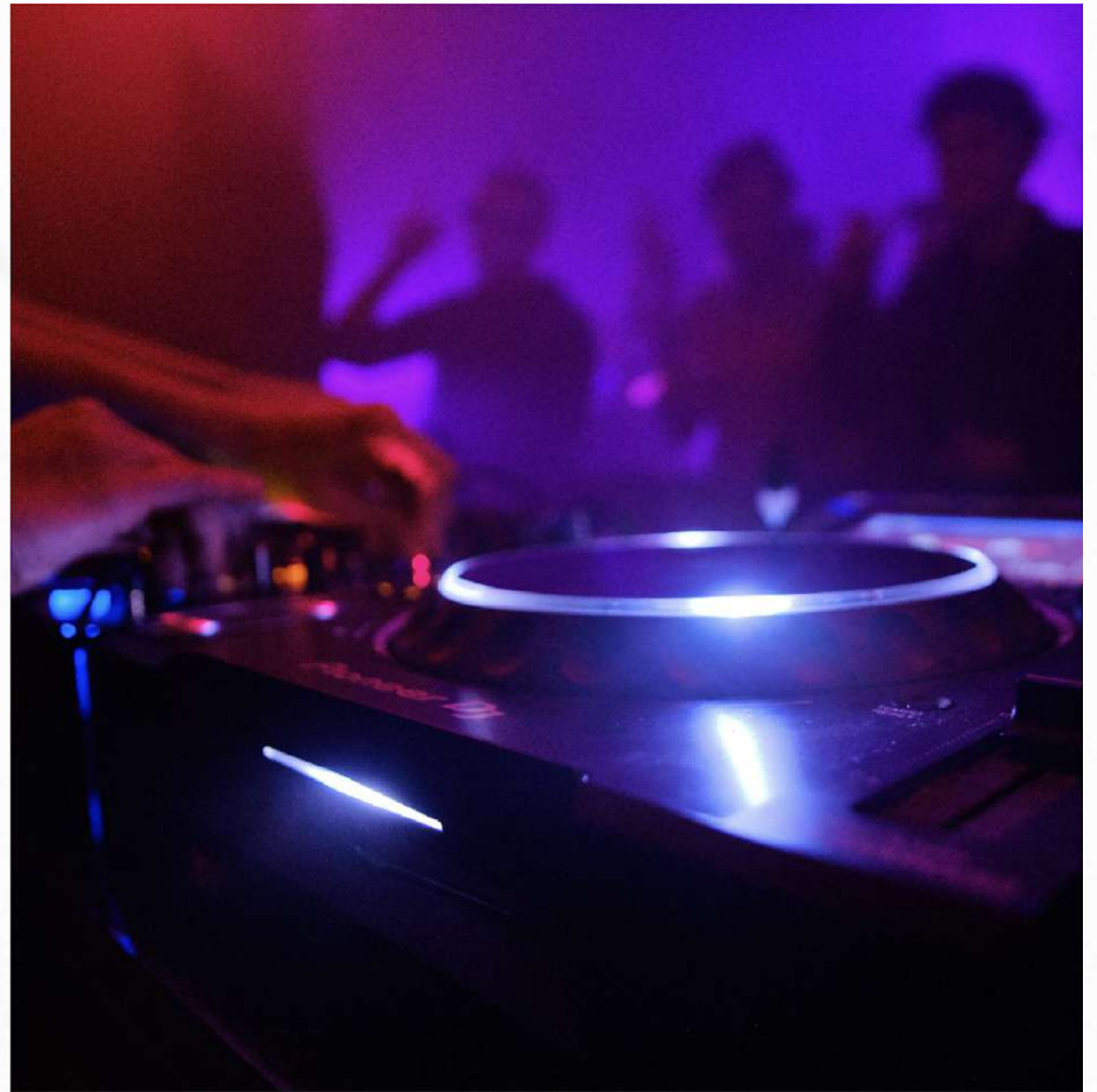
Daily Sport Activities: Beach volleyball, basketball, Tennis, Table tennis, mini football, mini golf, Water Polo, Archery and Badminton, Yoga, Stretching, Fit Dance, Pilates, Step, Aerobics, Gymnastics, Total Body, Tabata, Trx, Water Gymnastics, Boccia, Backgammon, Card Games, Dart, Billiards, Shuffle Board

Entertainment: Live shows, Live Music Bands, DJ Performance

Polly Kids Club: 10:00 - 22:00, Age between 04-12 years kid's welcome package Mini Disco, Kids show, cinema, pool games, children playground

Teenage Club: Age between 12-16 years, Social Corner, Play Stations, Disco with DJ lessons, lounge and game room.

Fitness Center.



Our operation, such as meals and services, are adjusted according to the international and local rules and guidelines. Changes to hotel information, facilities, activities and services can occur for a variety of reasons. Paloma Hotels reserves the right to make changes without prior notice.

SERVICES WITH CHARGE

Spa & Wellness: Spa Centre, beauty care, skin care, body care, facial care, massages, hydro therapies, special treatments

Land Sports: tennis courts flood lights, tennis racket & balls.

Baby sitter service on request with an extra charge

Laundry service with an extra charge

Doctor Service with an extra charge (on call)

Hairdresser with an extra charge

Private Beach Cabanas: between 10:00 - 18:00 – with an extra charge

Reservation is required through Guest Relations.

All Day Service – Orders can be made from Cabana QR menu and

Paloma Hotels App

OTHER FACILITIES & SERVICES

Shopping area

Nurse Service

Turkish Hammam, sauna, steam room

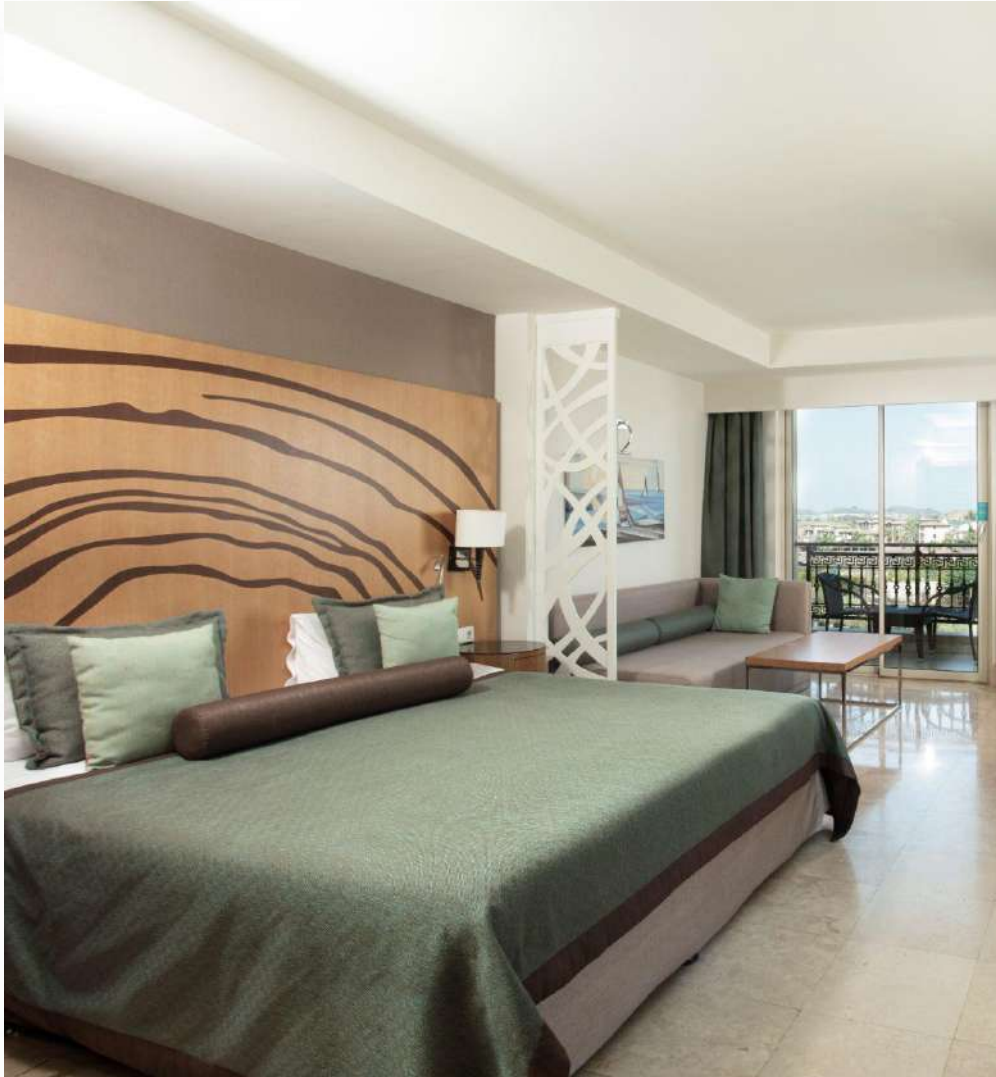
Complimentary WI-FI in rooms and public areas

Outdoor car park



Our operation, such as meals and services, are adjusted according to the international and local rules and guidelines. Changes to hotel information, facilities, activities and services can occur for a variety of reasons. Paloma Hotels reserves the right to make changes without prior notice.

ACCOMMODATION PACKAGES



Family Comfort Package

Available in Family Suite and Family Connection rooms upon request

Baby & Toddler Package (0-4): Bottle warmer, baby bath, baby cot, baby phone, bottle sterilizer and baby carriage are available on request (with deposit)

Family Suites

Fresh fruits and organic bottle of wine on arrival

Turndown service

Bathrobes and slippers

Lake Villas

Fresh fruits, Fresh flowers and organic bottle of wine on arrival

Turndown service

Bathrobes and slippers

24 hours room service, free of charge (excluding alcoholic-beverages)

Private Villa Pool & Bar & Breakfast

Priority reservations for A'la Carte Restaurants

Daily service of cookies for tea time at 17.00 h

ACCOMMODATION	Standard Bungalow Garden	Family Suite Garden	Family Connection Building	Standard Land View Main Building	Standard Sea View	Terrace Deluxe Main Building	Family Suite Main Building	Lake Villa
Total Rooms 482	144	18	48	198	40	12	8	14
M ²	30	60	60	40	40	40	65	90
Minimum Pax	1	2	2	1	2	2	2	2
Maximum Pax	2+1 (2-12 ages)	3+2	4+1	3+1	3, 2+2	3, 2+2	4	4+1
Sea View	-	-	-	-	X	X (6 room Sea View)	X (4 room sea View)	-
Garden/Land View	X	X	X	X		X	X	X
Telephones [extra]	X	X	X	X	X	X	X	X
Flat TV - Satellite	X	2	2	X	X	X	2	2
Hairdryer	X	X	X	X	X	X	X	X
WC	X	2	2	X	X	X	2	2
Walk-in Shower	X	2	2	X	X	X	2	2
Twin Bed or French Bed	X	-	-	X	X	-	-	-
French Bed	-	-	-	-	-	X	X	-
Twin and French Bed	-	X	X	-	-	-	-	X
Sofa Bed	X	-	-	X	X	X	X	X
Number of Bedrooms	-	2	2	-	-	-	-	2
Living Room	-	-	-	-	-	-	X	X
Mini Bar	X	2	2	X	X	X	2	2
Kettle	X	X	X	X	X	X	X	X
Safe Box [f.o.c)	X	X	X	X	X	X	X	X
Central A/C & Heating	-	-	X	X	X	X	X	-
Split A/C & Heating	X	X	-	-	-	-	-	X
Seating Group	X	-	-	X	X	X	X	X
Balcony / Terrace	B	B	B	B	B	B&T	B	T

Handicap Rooms: 4 Standard Land View Main Building Rooms available on request
Room door: 110 cm wide, 220 cm high. Bath room door: 110 cm wide, 220 cm high. Balcony door: 180 cm wide, 220 cm high
Lift: 100 cm wide, 220 cm high

MEETING ROOMS & FACILITIES & EQUIPMENTS

HALLS	Area (m ²)	Theatre
Oceana 2	90	80
Oceana 1 - Multipurpose Meeting Room	566	648

- Technical equipment provided upon request
- Complimentary WIFI in all areas
- A/C system available



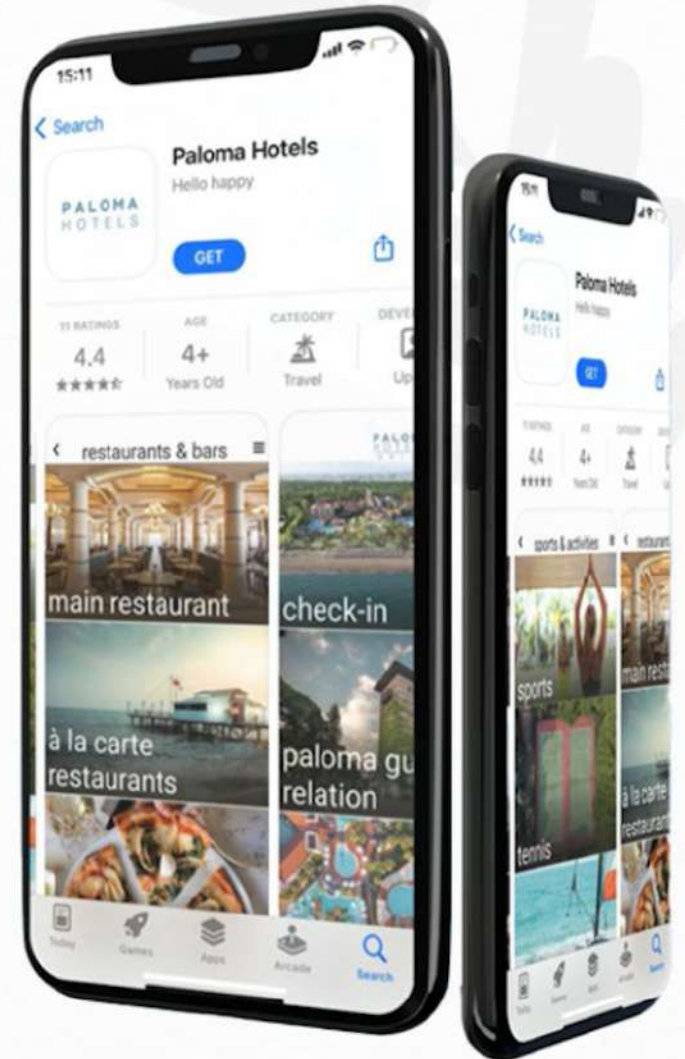
Our operation, such as meals and services, are adjusted according to the international and local rules and guidelines. Changes to hotel information, facilities, activities and services can occur for a variety of reasons. Paloma Hotels reserves the right to make changes without prior notice.

GO PAPER LESS

As Paloma Hotels, **we reduce paper waste** by offering all our services (hotel brochures, menus, hotel plan etc.) through **Paloma QR in rooms or Paloma Hotels mobile application.**

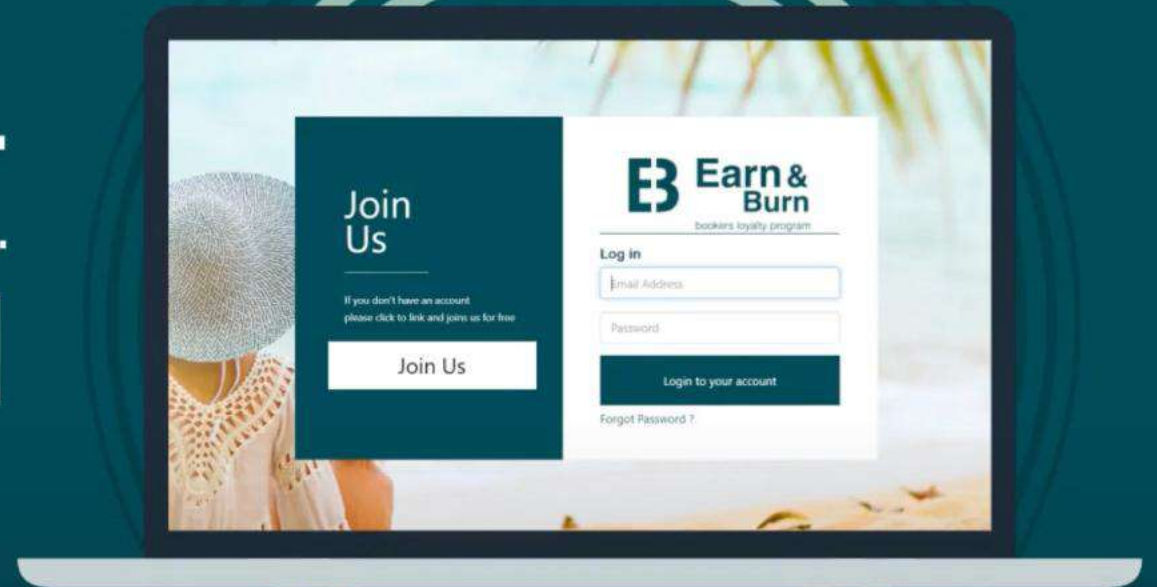
In addition, you can **view all the menus** and **make your reservation for our à la carte restaurants, place your 24-hour room service order and contact guest service** via Whatsapp chat through Paloma Hotels App.

SMART & USER-FRIENDLY PALOMA APP



Sign up on our website.
Start collecting your points.

Plan your own vacation!



PALOMA
HOTELS

OCEANA

Fact Sheet | Summer 2024

TURKEY

FINESSE SIDE
PALOMA OCEANA

• PALOMA ORENDA
• PALOMA FORESTA

• PALOMA PERISSIA
• PALOMA PASHA

• PALOMA GRIDA
• PALOMA MARINA SUITES

[PALOMAHOTELS.COM](https://palomahotels.com)

 +90 850 440 00 00

  /PALOMAHOTELS